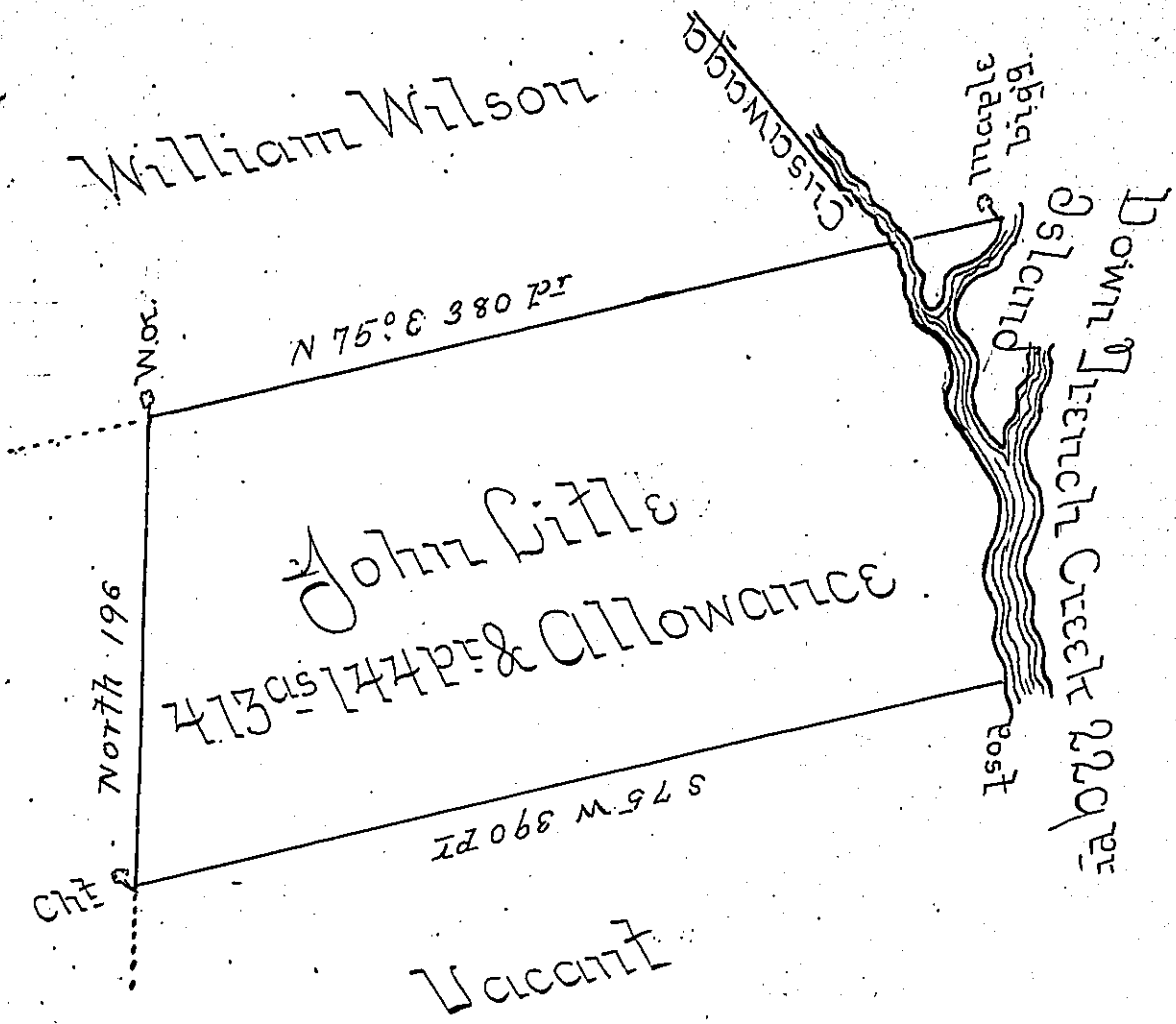


RIVER COURSES
 beg^s 54. W. 15
 S 61 W. 12
 S 23½ W. 16
 S 31 W. 25
 S 45 W. 12
 S 3 W. 11
 S 36° E 38
 S 38° E 22
 S 26 W. 24
 S 11½° E 58
 229 ps



Situate in Allegheny County on the West side of Trench Creek adjoining the Mouth of Cusawaga Containing four hundred and thirteen acres and one hundred and forty four ps and allowance of six per Cent &c Surveyed the 2^d day of June 1794 in pursuance of an improvement

To Daniel Brodhead Esq } Wm Power D.H. SE
 Surveyor General - }

As the above described Tract of Land is disputed by John Alden (in Right of Elias Boys -) on a Warrant bearing date 13th day of (obl.) 1792 and entered in my Office 4th March 1794 in
 obliterated -

IN TESTIMONY that the above is a copy of the original remaining on file in the Department of Internal Affairs of Pennsylvania, made conformably to an Act of Assembly approved the 16th day of February, 1833, I have hereunto set my Hand and caused the Seal of said Department to be affixed at Harrisburg, this second day of February 1907.

Jane R. Brown
 Secretary of Internal Affairs.